

HM9000FP1

PATIENT MONITOR



**7215 N.W, 46th St.
Miami FL 33166
U.S.A.**

P: +1 305 594 7474

F: +1 305 477 0699

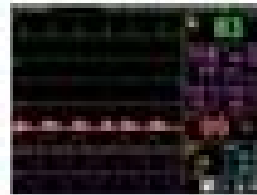
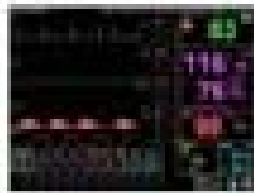
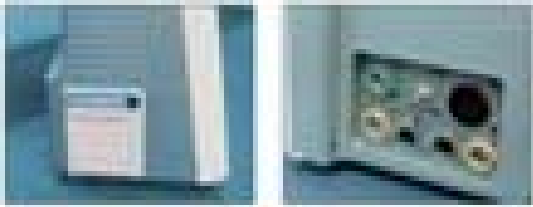
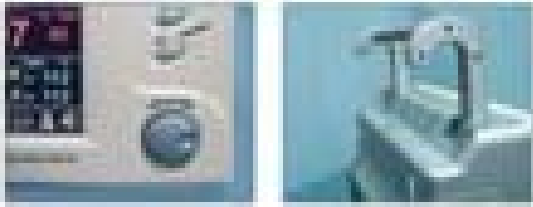
Features

- Ø 10.4" color display,CRT or larger display can be connected simultaneously
- Ø AC Power and Internal rechargeable battery
- Ø 13 kinds of Arrhythmia analysis, HRV and S-T segment analysis
- Ø 60 seconds ECG waveform review
- Ø 7-Channel ECG waveforms displayed simultaneously
- Ø Drug Dose calculation
- Ø Maximum 72-hour graphic and tabular trends of all Parameters
- Ø Adjustable 3 level audio and visual alarm
- Ø Anti-high-frequency electrosurgical equipment
- Ø Optional with Built-in 3 channels thermal recorder; External Printer can be connected
- Ø Networked with central monitoring system by wired or wireless LAN
- Ø Applicable for Adult, Pediatric and Neonatal patient

Standard Configuration

5-lead ECG, NIBP,SpO₂,RESP,Dual-TEMP,Lead Acid Battery, Wired Networking Card for Wired LAN

HM9000FP1



Accessories

- 5-lead ECG cable,
- Adult reusable NIBP cuff,
- Adult reusable SpO2 sensor with extension cable,
- Skin TEMP sensor with extension cable



Optional

- Dual-IBP, EtCO2, Printer, Wireless Networking Card for Wireless LAN

HM9000FP1



Technical Specifications

Safety

Meet the requirements of IEC60601 serials standards, CE marking according to MDD93/42/EEC

Dimension and Weight

Dimension: 335mm (W) × 245mm (H) × 175mm (D)

Weight: 3.7Kgs without battery

5.0Kgs with 1 battery

Operation Environment

Power: AC100 - 240V (±10%), 50/60 Hz (±1 Hz)

Temperature: +5°C to +40°C

Humidity: ≤80%, non-condensing

Patient Range

Adult, Pediatric and neonatal

Performance Specifications

Display: 10.4" color active matrix TFT

Resolution: 640×480

Trace: 9 waveforms maximum

Indicator: Power indicator light

QRS beep and alarm sound

Battery: Built-in rechargeable battery

Battery life: 2 hours minimum

Trend time: 1-72 hours

Alarm: 3-level audible and visual alarm

Networking: LAN / Wireless LAN to CHOICE central station

Recorder (optional): Built-in, thermal array, 3channels

Record width: 48mm,(record paper 50mm)

Record speed: 25mm/s

Other: medicine, oxcart, trends in one screen

ECG

Lead Type: 5-lead or 3-lead selectable

Input: 5-lead: RA; LA; RL; LL; V or R; L; N; F; C

3-lead: RA; LA; LL or R; L; F

Lead Selection: 5-lead: I; II; III; aVR; aVL; aVF; V

3-lead: I; II; III

ECG Waveform: 7 channels (808 function boards)

Gain Selection: 0.25, 0.5, 1.0, 2.0, 2.5 (mm/mV), auto

Sweep Speed: 12.5mm/s, 25mm/s, 50mm/s

Heart Rate Range: Adult: 15-300 bpm

Pediatric / Neonatal: 15-300 bpm



7215 N.W, 46th St.

Miami FL 33166

U.S.A.

P: +1 305 594 7474

F: +1 305 477 0699

HM9000FP1



Technical Specifications

Accuracy: < 100 bpm \pm 1 bpm or \geq 100bpm \pm 2%

Resolution: 1 bmp

Bandwidth: Diagnostic mode: 0.05-100Hz

Monitor mode: 0.5-75Hz

Operation mode: 1-25Hz

Calibration signal: 1mv \pm 5%

CMRR: >80dB

S-T detection: YES

Measurement range: -0.8mV ~ 0.8mV

Arrhythmia analysis: YES

Alarm: YES, audible and visual alarm

Respiration

Method: RA-LL impedance

Measurement Range: 15-100 rpm

Resolution: 1 rpm

Accuracy: 15rpm~60rpm; \leq 2rpm

60rpm~100rpm; \leq 5rpm

NIBP

Method: Oscillometric

Operation Modes: Manual/Automatic/STAT

Measurement Unit: mmHg/kpa selectable

Measurement Types: Systolic, Diastolic, Mean

Measurement Range: Adult: Infant:

Systolic: 30mmHg -255mmHg 30mmHg -150mmHg

Diastolic: 15mmHg -220mmHg 15mmHg -110mmHg

Mean Arterial: 20mmHg-235mmHg 20mmHg-125mmHg

Over-pressure protection: YES

Resolution: 1 mmHg

Temperature

Scale: $^{\circ}$ C and F selectable

Measurement Range: 25-45 $^{\circ}$ C

Resolution: 0.1 $^{\circ}$ C or 0.1F

Accuracy: \leq 0.1 $^{\circ}$ C

Channel: 1channel/ 2channel(optional)

Alarm Range: 0-50 $^{\circ}$ C

Accuracy: \pm 2 bpm (30-250 bpm)

Alarm range: 0-254 bpm



7215 N.W, 46th St.

Miami FL 33166

U.S.A.

P: +1 305 594 7474

F: +1 305 477 0699

HM9000FP1



Technical Specifications

SPO2

Measurement Range: 70-99%
Resolution: 1%
Accuracy: 81~99% $\leq \pm 2\%$; 70~80% $\leq \pm 3\%$
Pulse Rate Range: 30-235 bpm
Accuracy: < 100 bpm ± 2 bpm or ≥ 100 bpm $\pm 2\%$
Resolution: 1 bpm

IBP (optional)

Measurement Range:
Static pressure: -50~350 mmHg
Systolic: 30~240 mmHg
Diastolic: 10~160 mmHg
Accuracy:
Static pressure: ≤ 100 mmHg: ± 2 mmHg; > 100 mmHg: $\pm 2\%$
Systolic: ≤ 100 mmHg: ± 2 mmHg; > 100 mmHg: $\pm 2\%$
Diastolic: ≤ 100 mmHg: ± 2 mmHg; > 100 mmHg: $\pm 2\%$
Channel: 2 channels
Measurement Unit: mmHg/kpa selectable
Resolution: 1 mmHg

EtCO2 (optional)

Sampling Method: Built-in sidestream sensor
Measurement Mode: Sidestream
Measurement range: 0-99 mmHg
Resolution: 1 mmHg
Accuracy: CO2 concentration:
 ≤ 38 mmHg: ± 3 mmHg;
> 39 mmHg: $\pm 10\%$
Alarm range: Same as Measurement range

Accessories of the standard configuration

5-lead ECG cable 1 pc
Electrode 10 pcs
SPO2 sensor for adult 1 pc
NIBP Cuff for adult 1 pc
NIBP extension tube 1 pc
Skin/Rectal TEMP probe can be selected 1 pc



**7215 N.W, 46th St.
Miami FL 33166
U.S.A.**

**P: +1 305 594 7474
F: +1 305 477 0699**